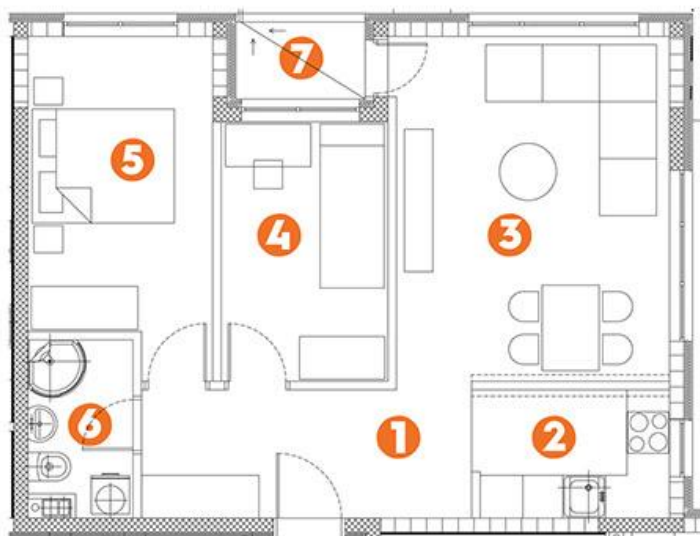


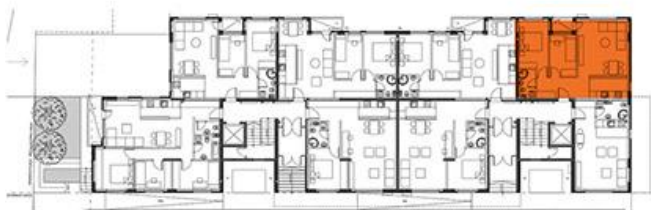
STAN 7 - prizemlje / dvoiposoban - 61.15 m²



ORIJENTACIJA STANA: Severo-istok



| | | |
|---|----------------|-------|
| 1 | Ulaz | 8.30 |
| 2 | Kuhinja | 6.02 |
| 3 | Dnevni boravak | 21.41 |
| 4 | Spavaća soba | 8.53 |
| 5 | Spavaća soba | 11.46 |
| 6 | Kupatilo | 3.46 |
| 7 | Lodja | 1.97 |



| TEHNIČKA OPREMLJENOST: | GREJANJE: | PREVOZ: | POGODNOSTI: |
|------------------------|----------------|-------------|--------------------|
| - Telefon | - Internet | - Centralno | - Garaža |
| - Kablovska | - Video nadzor | - Autobus | - Stanarska ostava |
| - Interfon | - Lift | | |
| - Mesto za klimu | | | |

Ekskluzivni zastupnik prodaje stanova i lokala:

coreside
An International Associate of Savills



Telefon: + 381 11 301 0000
Mobilni: + 381 63 234 805
Mobilni: + 381 63 430 605
Fax: + 381 11 301 0015
Adresa: Knez Mihailova 1, 11 000 Beograd, Srbija